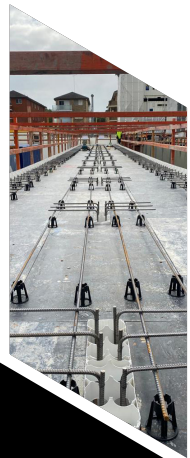
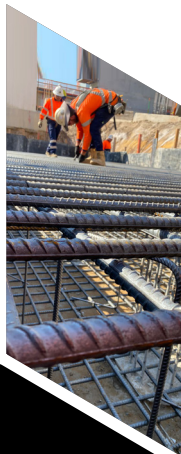
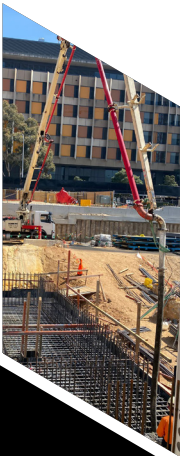


# TYLIM CIVIL



## CAPABILITY STATEMENT



Tylim Civil is your civil construction company specialising in FRP infrastructure.



[www.tylimcivil.com](http://www.tylimcivil.com)



# WE ARE SYDNEY'S CONCRETE FORMWORK & PIT BUILDING SPECIALISTS

## WE ARE SYDNEY'S CIVIL CONSTRUCTION SPECIALIST.

Tylim Civil offers a wealth of experience in all FRP Civil and residential works.

We utilise the most up to date equipment along with our extremely competent staff at both management and trade level to deliver products that exceeds client expectations.

We thrive ourselves on safety and our reputation as being reliable and the go to contractor for all FRP works, our experienced team have worked in sectors that include road infrastructure, utilities, residential and civil.

We specialise in deep structures both for sewer and drainage, by but are not limited to excavation, general concreting, form working,

All our employees are highly trained with all the relevant training including HRL, B80, SOA & VOC's



**"It is our mission to perform the highest level of quality construction services at fair and market competitive prices for our customers."**



## OUR WORKFORCE

TYLIM CIVIL has an expert and highly skilled workforce, which comprises both in-house and on-site personnel.

There is a diverse range of professionals such as project managers, foremen, supervisors, form workers, concreters and office administrators.

We place a strong emphasis on continuously enhancing our staffs' skills and knowledge to meet the demands of the job. Our workforce receives comprehensive training and development to acquire new skills that are essential for our daily-to-day operations.



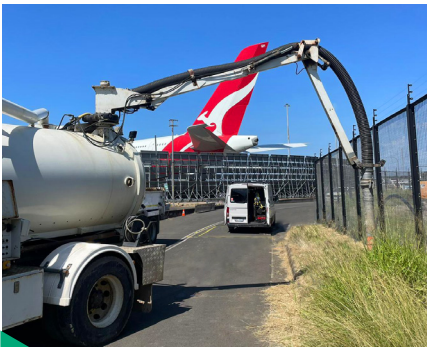
## SERVICES

- ▶ Concrete Structures
- ▶ Precast
- ▶ Drainage
- ▶ Kerb and Gutters
- ▶ Sewer, Manholes & Pits
- ▶ Water Storage

# OUR FLEET

TYLIM CIVIL owns, operates and maintains a fleet of vehicles that allow us to meet the requirements of a vast amount of projects across Sydney region.

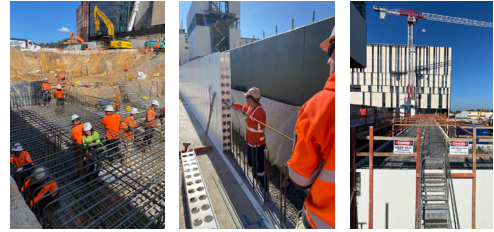
- ▶ Hiab Truck
- ▶ Flat Bed Trucks
- ▶ Tipper Trucks
- ▶ Excavators 5 - 23 T
- ▶ Dumper Trucks 3 - 9 T
- ▶ 4000L Vacuum Truck
- ▶ Fully equipped Tool Vans & Utes
- ▶ 2.5T Forklift



# KEY PROJECTS

## Randwick UNSW Health Hub

Elevator n staircase shaft, carpark slabs including retaining wall footing and dintel walls, 1000<sup>3</sup> OSD tanks, pile caps, and footing beams. Tylim civil also completed driveway slabs, stairs, pram ramps and all FRP needs.



## Kembla Grange Meter Station & MLV

► As part of Jemena's Project Marlin

Tylin Civil completed electrical works, concrete works, drainage infrastructure, underground services installation and ancillary civil works including retaining wall, pits, culverts, piling up to 14m deep.



## Ardee Civil

### ► Multiple locations

Tylin Civil were engaged for sewer manholes, shafts, wet wells, pump stations, deep tanks, culverts, concrete slabs and driveways as well as kerb and guttering. All works were completed to Sydney Water standards

## Western Sydney Airport

### ► Multiple projects

Tylin Civil have completed multiple projects on the WSA site including insitu head walls, single sail pipe to quad 1800 head walls, insitu culvert bases, PRV pits, hard stand construction, driveway and crane pads.

## Sydney International Airport

Tylin Civil were contracted to restore and replace existing concrete driveways for fuel tankers, over 100m of footpath and kerb & gutter, medium islands, retaining walls up to 3m, transformer concrete slabs. They also completed drainage works including large drainage pits, chambers and stormwater lines.



## Old Wall Grove Rd Upgrade

Tylin Civil were engaged on the sewer diversion to complete large 1800mm sewer manholes with depths up to 20m as well as pipeline works.



"We take pride in the outcome of our projects."

We have completed projects and scopes on many other large sites including:

- Paramatta Light Rail
- Rozelle Interchange
- The Gateway Project

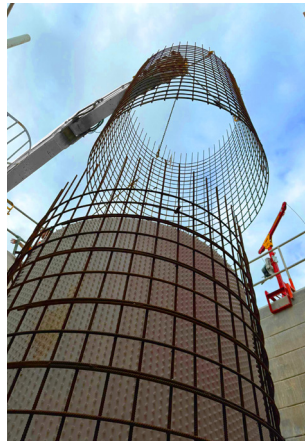
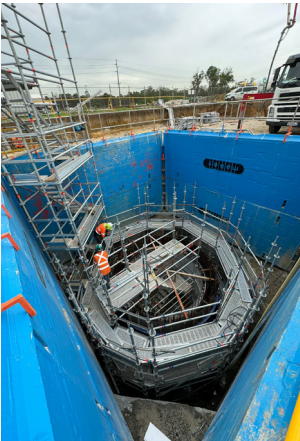
**“At TYLIM CIVIL, we are committed to maintaining impeccable safety, quality, and environmental standards on all of our projects.”**

## **Sydney Water Treatment Plant Western Sydney**

- ▶ 10m deep wet well gas check manhole
- ▶ Inlet valve chamber
- ▶ Overflow weirs
- ▶ Special design formwork and scaffolding – engineering sign offs
- ▶ Prefabbed bases and shutters
- ▶ 4000m<sup>2</sup> slabs, footpath kerb & gutter, install insitu culverts all to Sydney water standards
- ▶ Manufacturing specialist rolled steel for tanks

### **Highly trained in:**

- ▶ Confined space
- ▶ Working at heights
- ▶ B80



## **SAFETY RECOGNITION**

Wasco/Jemena presenting Tylim Civil with a safety award for outstanding work as part of the Kembla Grange Meter Station & MLV Project.

**Safety is our priority.**

**We are committed to ensure the health and safety of our employees and subcontractors.**



To view our latest projects visit [www.tylimcivil.com](http://www.tylimcivil.com) and connect with us on [LinkedIn](#)



## CLIENTS & VALUED PARTNERS

We have built strong relationships and reputations with valued clients and partners to provide full service and quality in every project.



# TYLIM CIVIL

**TYLIM CIVIL PTY LTD**

41 Green Street, Kogarah, NSW 2217  
0410 582 863 | [info@tylimcivil.com](mailto:info@tylimcivil.com)

## LET'S DISCUSS YOUR NEXT PROJECT

For any inquiries, quotes or questions, please contact James on 0410 582 863.

To view our latest projects visit [www.tylimcivil.com](http://www.tylimcivil.com) and connect with us on [LinkedIn](#)